

NUFLO™

MC-III™ EXP Flow Analyzer

For state-of-the-art liquid and gas measurement with data logging and Modbus communications in an easy-to-use explosion-proof totalizer, nothing compares with the NuFlo MC-III EXP Flow Analyzer.

The MC-III EXP stores more flow logs and downloads them faster than any other flow analyzer on the market.

This powerhouse records up to 384 daily flow logs, 768 hourly logs, 345 event logs and downloads them to your computer via Modbus in less than a minute!

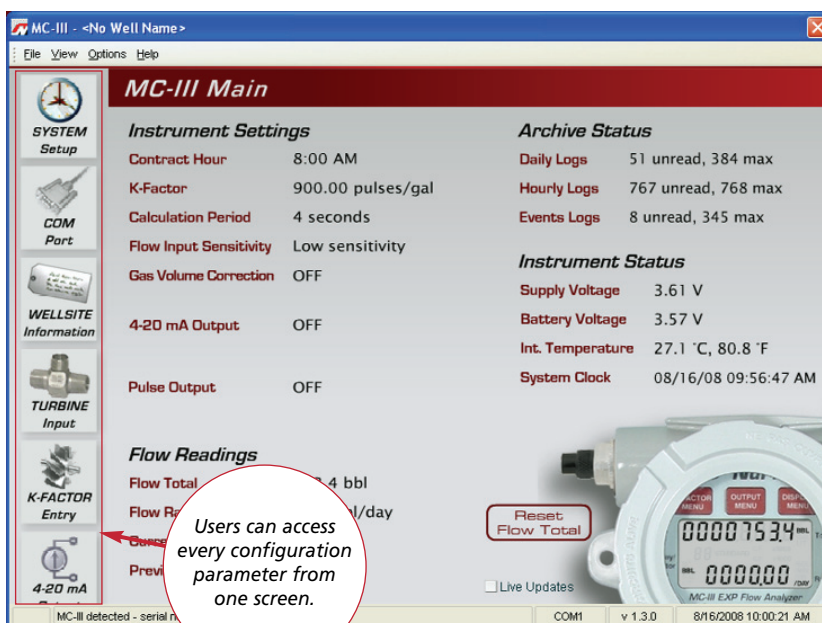
Features

The MC-III EXP offers:

- RS-485 Modbus communications
- Extensive log archival capacity
- High-speed data downloads (less than a minute, based on 115K baud transfer speed)
- New interactive interface with a built-in "wizard" for quick and easy calibration and data access
- Simultaneous indication of rate and total
- Easy-to-read LCD displays
- Loop-powered analog output
- 12-point linearization
- Nonvolatile memory
- Password-protected security options
- Explosion-proof reset switch with daily log viewing capabilities (option)
- Explosion-proof communications adapter for laptop connections (option)
- Intrinsically safe RS-485 output (option)



Modbus communication, logging and accurate flow measurement – all in one compact explosion-proof device



Interface software makes configuration quick and easy.

The interactive software interface makes the MC-III EXP one of the easiest instruments to navigate and calibrate.

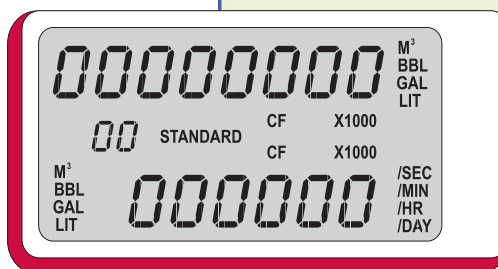
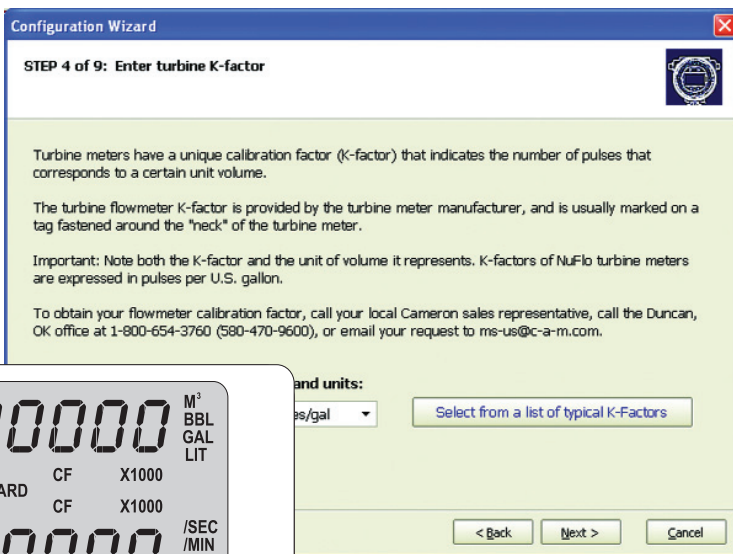


Calibration

Calibrating the MC-III EXP is as easy as entering the calibration factor of the flowmeter and selecting the desired units of measurement. The instrument automatically calculates its own divisor.

The wide variety of unit options for total and rate gives users the freedom to customize the display, inputs, and outputs for specific needs.

With the built-in "wizard" that guides users step by step through the configuration process, even first-time users will get dependable results in just minutes.

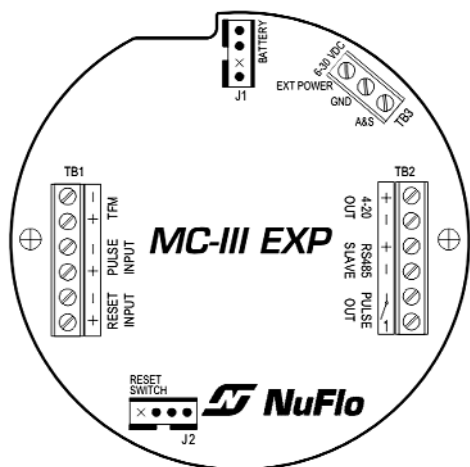
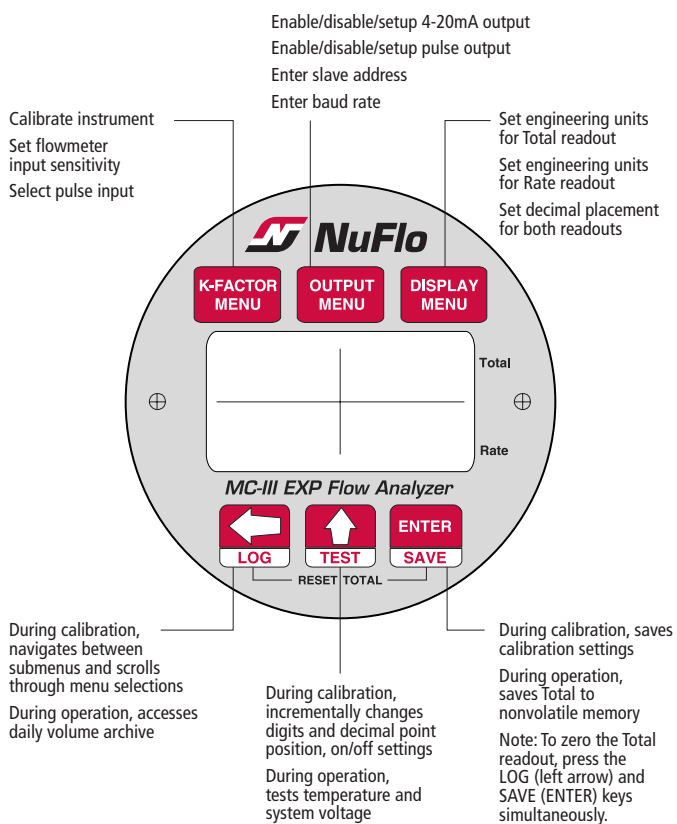


Keypad Configuration

The MC-III EXP can be configured with either the software interface or the six-button keypad on the front of the instrument. Built-in shortcuts to common functions (see diagram at right) simplify configuration, reducing the user's time spent on-site.

Inputs / Outputs

The MC-III EXP flow analyzer connects to a turbine meter or a pre-amplifier. Users can select a 4-20 mA output, a pulse output, or an amplified flowmeter frequency output that allows remote equipment to calculate flow rates and volume.



Display

- 8-digit display of Total
- 6-digit display of Rate (11-segment characters for easy-to-read prompts)
- Character height - 0.300 in.
- Adjustable contrast and update period
- User-selectable units of measurement:
 - Total: bbl, gal, liters, cubic meters, cubic feet, standard cubic feet, user-defined units (and all units x 1000)
 - Rate: Any of the above Total engineering units per day, hour, minute, or second

Calibration

- Liquid flowmeter: User enters calibration factor of meter and selects units of measurement
- Gas flowmeter: User enters calibration factor of meter, pressure and temperature parameters, and FPV via user interface software

Power Supply Options

- 3.6 VDC lithium battery pack – 2-year typical life (main or backup power supply)
- Alkaline battery pack option (main or backup power supply)
 - not recommended for temperatures consistently below 20°F
- External power supply (6 to 30 VDC) with internal battery backup
- Loop-powered (4-20 mA output) with internal battery backup

Temperature Range

- Lithium battery: -40°F to +158°F (-40°C to +70°C)
- Alkaline battery pack: 20°F to 140°F (-7°C to 60°C)
- LCD contrast is reduced below -20°C

Certification

- CSA-approved for US and Canada
- Class 1, Div. 1, Groups B, C, D (explosion-proof)
- Type 4 enclosure
- T6 temperature class

Communications/Archive Retrieval

- RTU mode Modbus
- Enron Modbus
- 16-bit slave address supported
- Data printouts in tabular or chart formats
- Data export to spreadsheet (.xls and .csv formats)

Inputs

Turbine Meter Input

- Configurable sensitivity adjustment
- Frequency range: 0 to 3500 Hz

Remote Reset Input

- Optically isolated
- Supply range: 3.0 to 30 VDC

External Reset Switch (Option)

- Explosion-proof
- Daily log viewing capabilities

Pulse Input

- Optically isolated
- Supply range: 3.0 to 30 VDC

Outputs

Analog Output

- 4-20 mA, loop-powered (two-wire)
- 16-bit resolution
- Accuracy: 0.1% of FS @ 25°C, 50 PPM/°C temperature drift
- Loop power: 8.0 to 30 VDC
- Zero and full-scale engineering values configurable from front panel

RS-485 Communications

- Baud rates: 300, 600, 1200, 2400, 4800, 9600, 19200, 38400, 57600 and up to 115.2K

Volumetric Pulse Output

- Solid-state relay
- Output rating: 60 mA max @ 50 VDC
- Configurable pulse duration and scale factor

Amp and Square Output

- Open-drain transistor output of turbine meter input signal
- Output rating: 50 mA @ 30 VDC (Analog output and amp and square outputs cannot be used simultaneously)

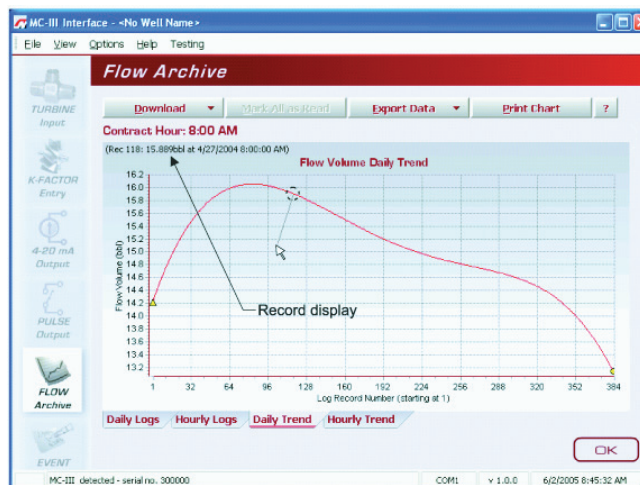
Interface Software

- Provided at no additional charge
- Complete configuration
- Real-time data
- Downloads and exports
- "Wizard" offers step-by-step calibration procedure

- Windows® 2000 or XP required

Flow Archive

- 384 daily logs
- 768 hourly logs
- 345 event logs
 - K-factor changes
 - Input setting changes





MEASUREMENT SYSTEMS

WARRANTY-LIMITATION OF LIABILITY: Seller warrants only title to the product, supplies, and materials and that, except to software, the same are free from defects in workmanship and materials for a period of one (1) year from the date of delivery. Seller does not warranty that software is free from error or that software will run in an uninterrupted fashion. Seller provides all software "as is". THERE ARE NO WARRANTIES, EXPRESSED OR IMPLIED, OF MERCHANTABILITY, FITNESS OR OTHERWISE WHICH EXTEND BEYOND THOSE STATED IN THE IMMEDIATELY PRECEDING SENTENCE. Seller's liability and Buyer's exclusive remedy in any case of action (whether in contract, tort, breach of warranty or otherwise) arising out of the sale or use of any product, software, supplies, or materials is expressly limited to the replacement of such products, software, supplies, or materials on their return to Seller or, at Seller's option, to the allowance to the customer of credit for the cost of such items. In no event shall Seller be liable for special, incidental, indirect, punitive or consequential damages. Seller does not warranty in any way products, software, supplies, and materials not manufactured by Seller, and such will be sold only with the warranties that are given by the manufacturer thereof. Seller will pass only through to its purchaser of such items the warranty granted to it by the manufacturer.

MEASUREMENT SYSTEMS

HOUSTON
HEAD OFFICE | **281.582.9500**

NORTH
AMERICA | **1.800.654.3760**
ms-us@c-a-m.com

ASIA
PACIFIC | **+603.5569.0501**
ms-kl@c-a-m.com

EUROPE,
MIDDLE EAST
& AFRICA | **+44.1243.826741**
ms-uk@c-a-m.com

USA • CANADA • UK • CHINA • UAE • ALGERIA • MALAYSIA • INDIA • KENYA

www.c-a-m.com/flo